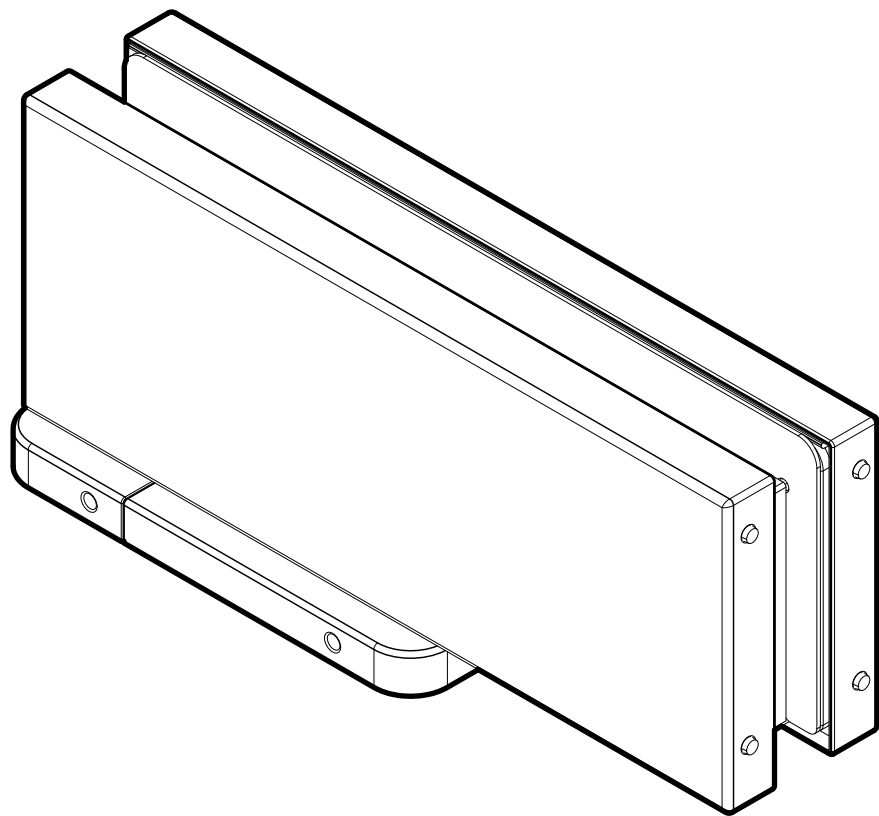
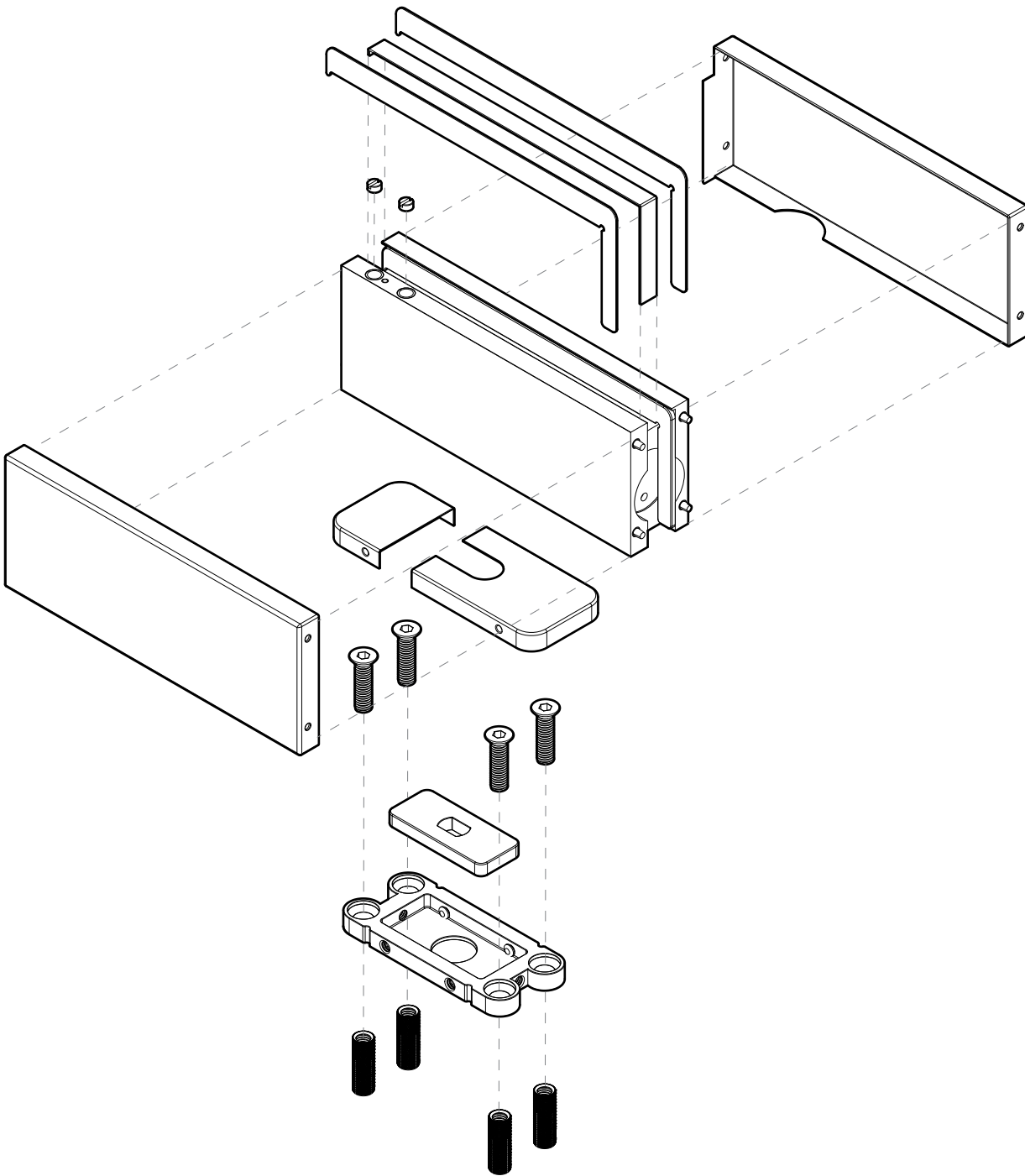
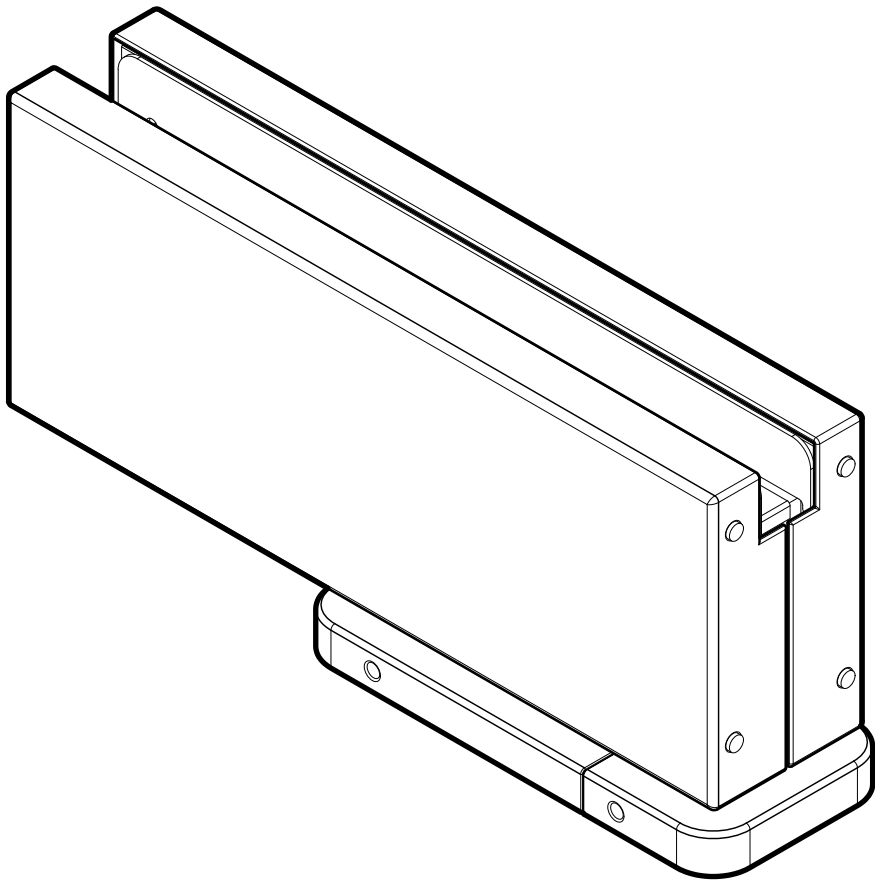


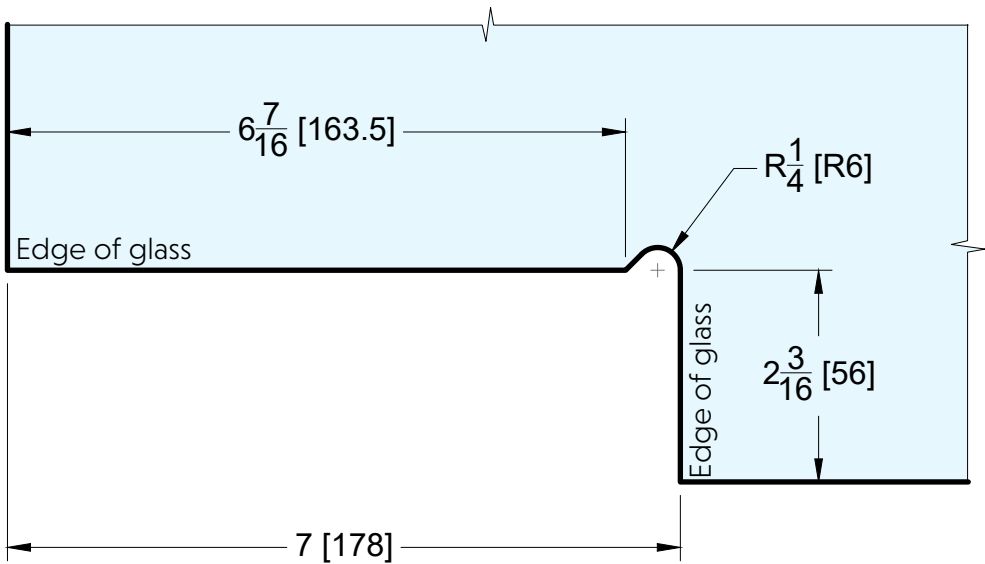
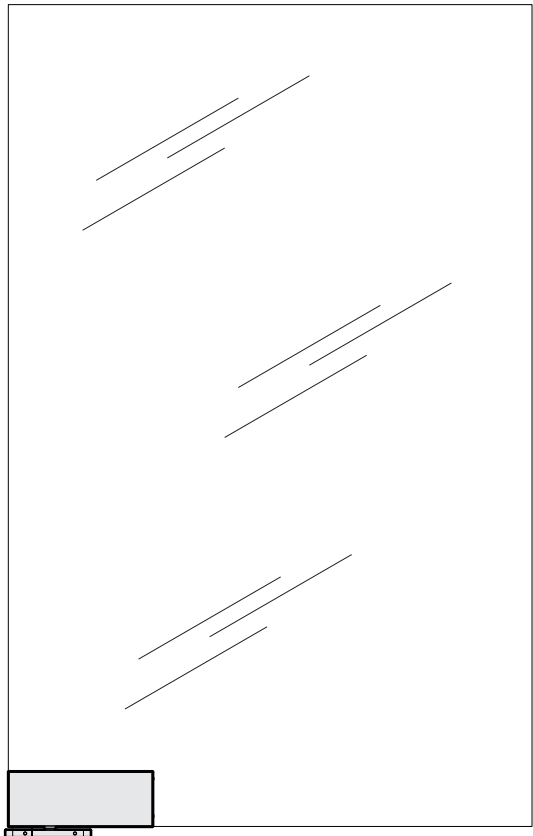
FRONT



BACK



GLASS CUT OUT



Specifications:

Glass thickness: 3/8" (10 mm) to 1/2" (12 mm).
Cutout required - Tempered glass

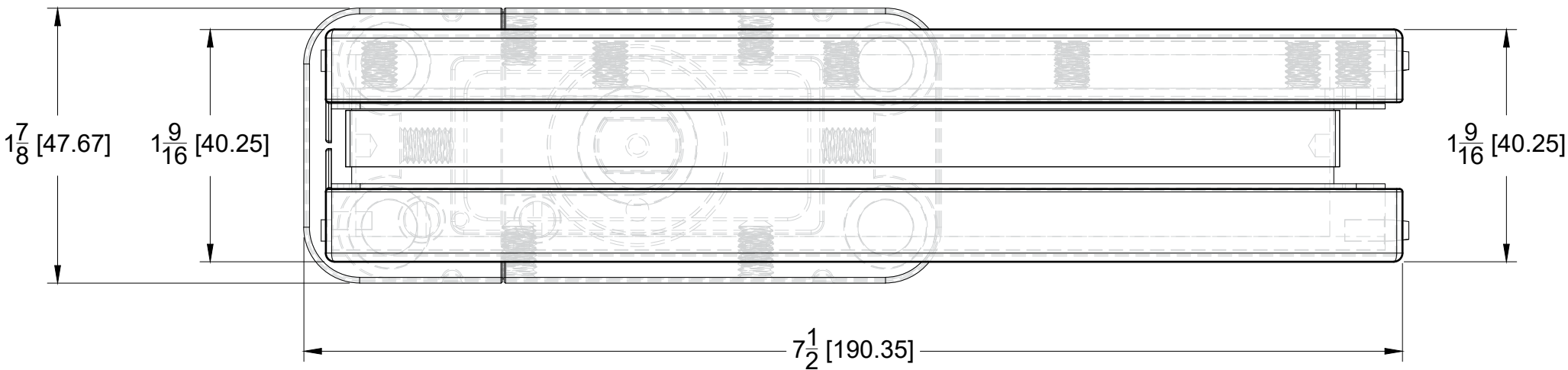
Includes: One Bottom Hydraulic Patch Fitting
(90 Degree Hold Open)

BEFORE PROCEEDING WITH FABRICATION, PLEASE ENSURE THAT YOU VERIFY ALL MEASUREMENTS.
IT IS CRUCIAL TO DOUBLE-CHECK THE SPECIFICATIONS TO AVOID ANY DISCREPANCIES. FOR THE
MOST UP-TO-DATE TECHNICAL SPECSHEETS AND CUTOUTS, KINDLY VISIT GLASSHARDWARE.COM.

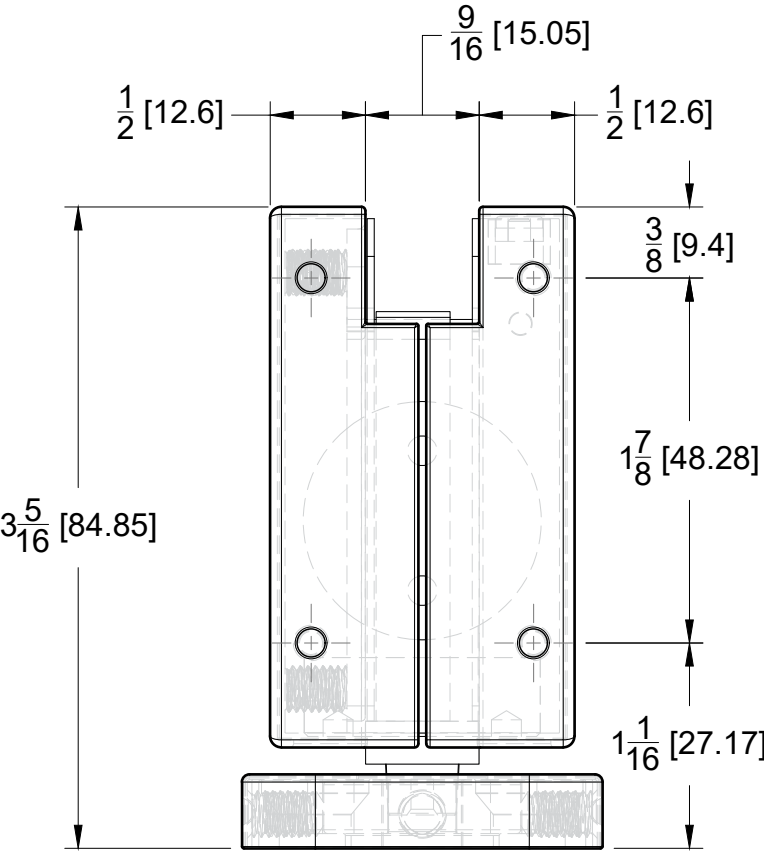
Date: 06/13/25

Sheet N°: 1/4

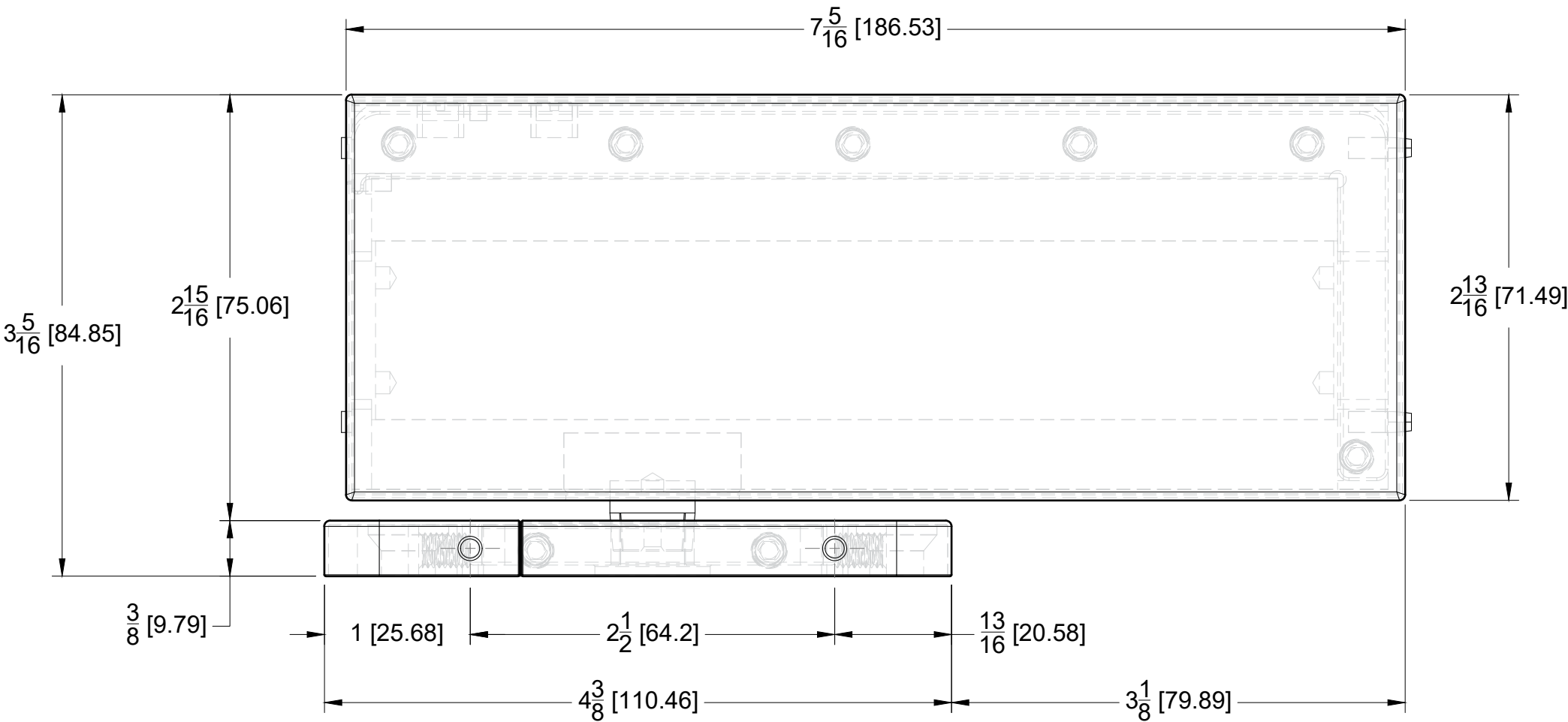
TOP VIEW



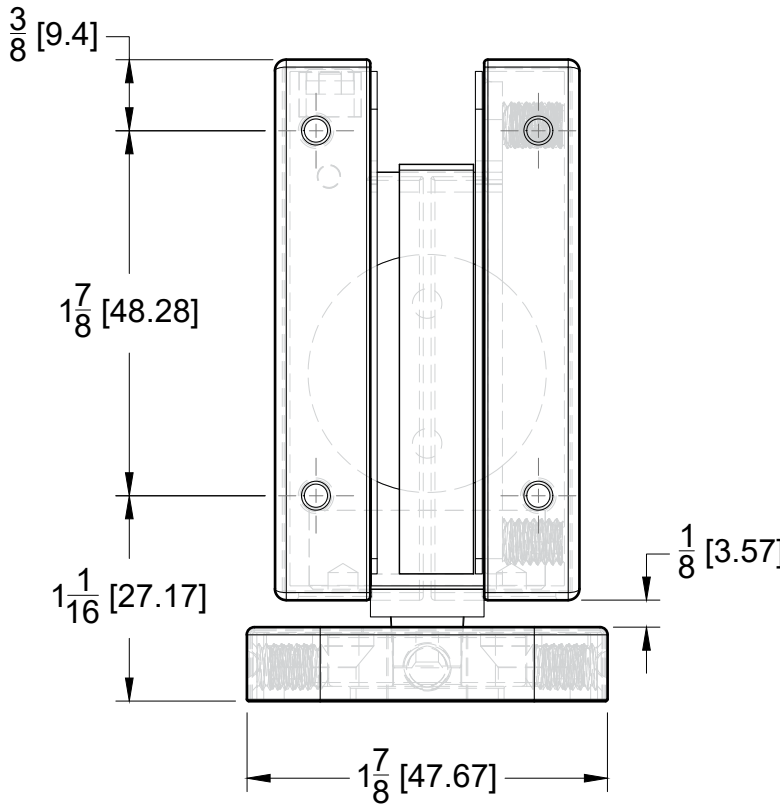
LEFT SIDE VIEW

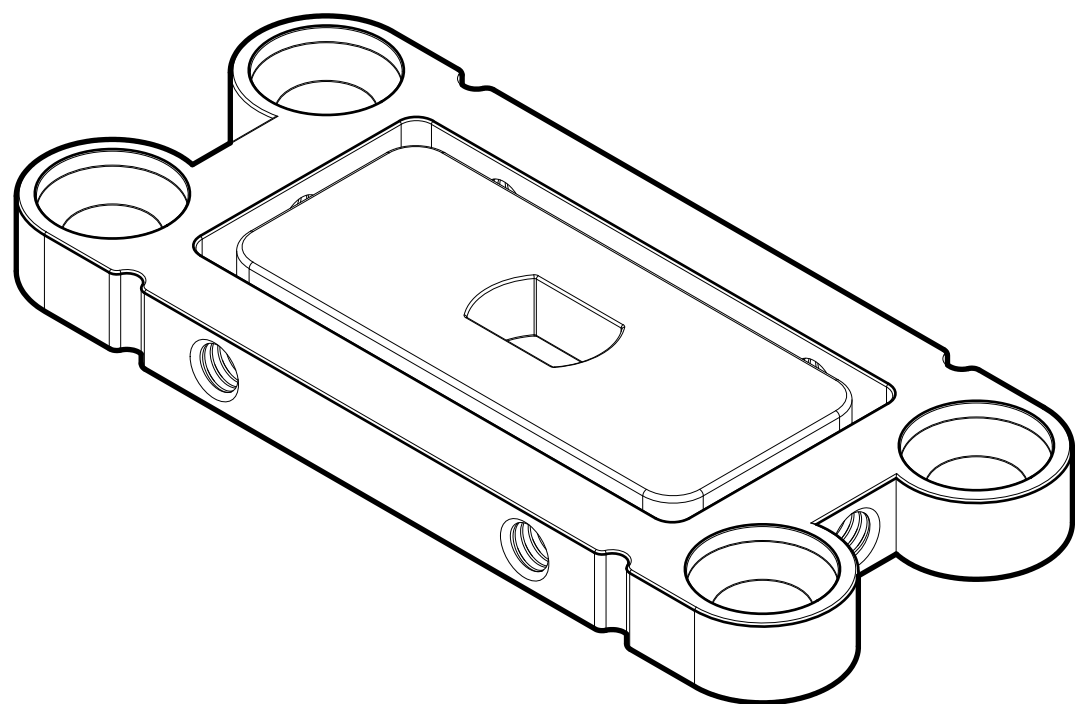


FRONT VIEW

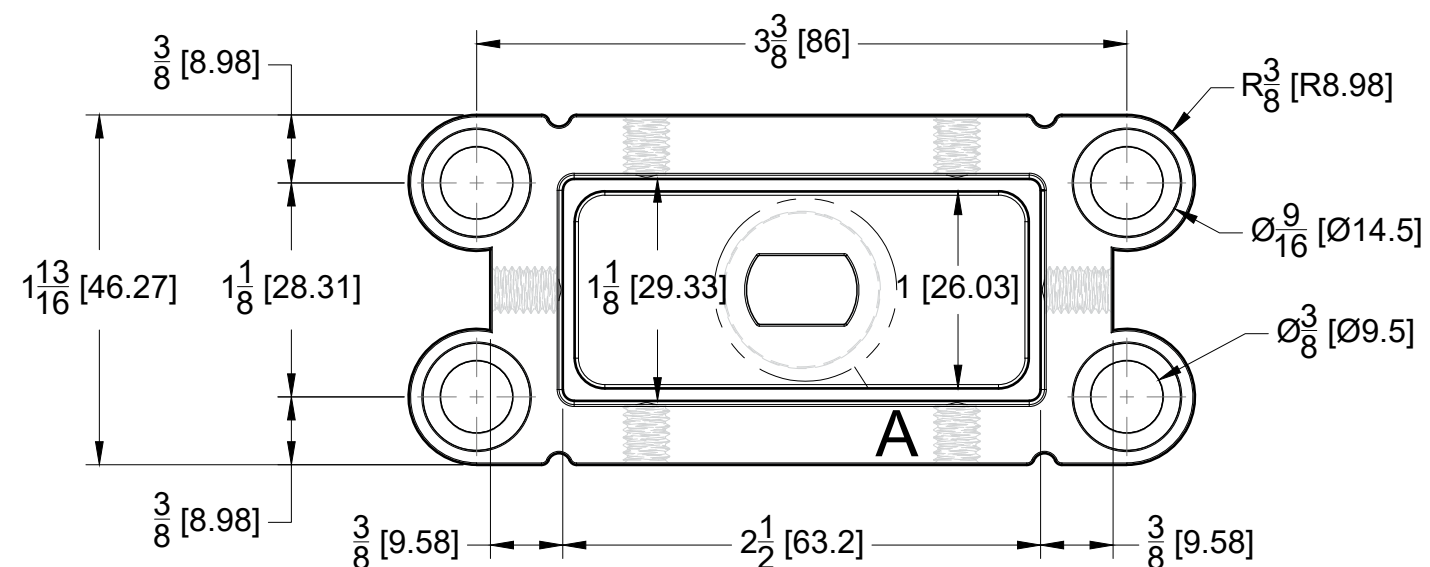


RIGHT SIDE VIEW

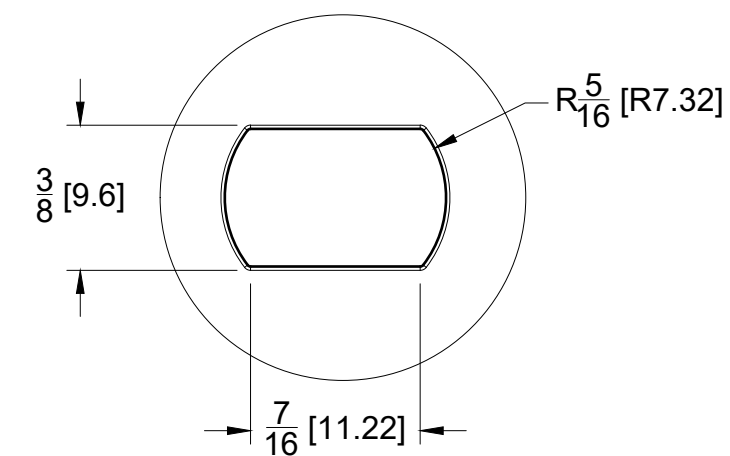




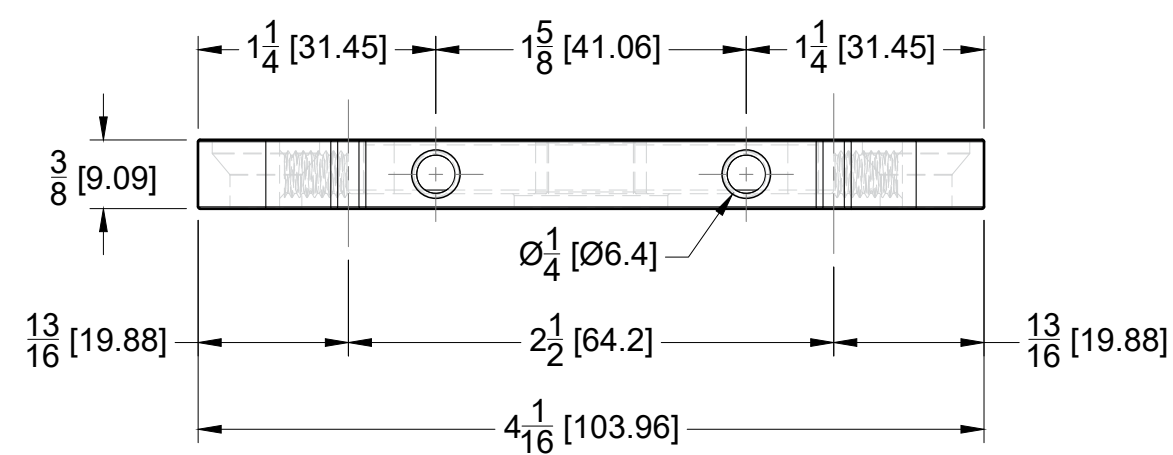
TOP VIEW



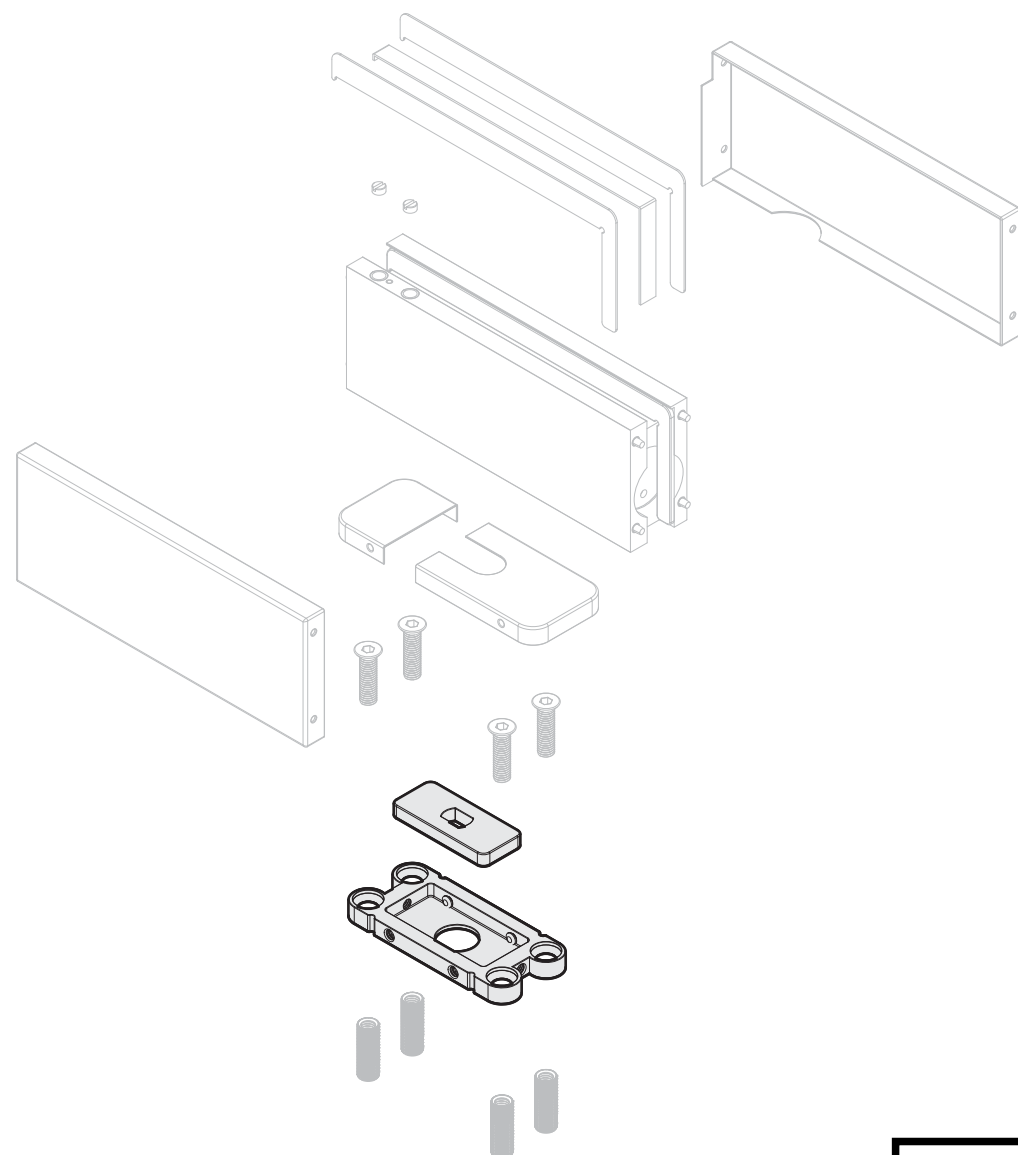
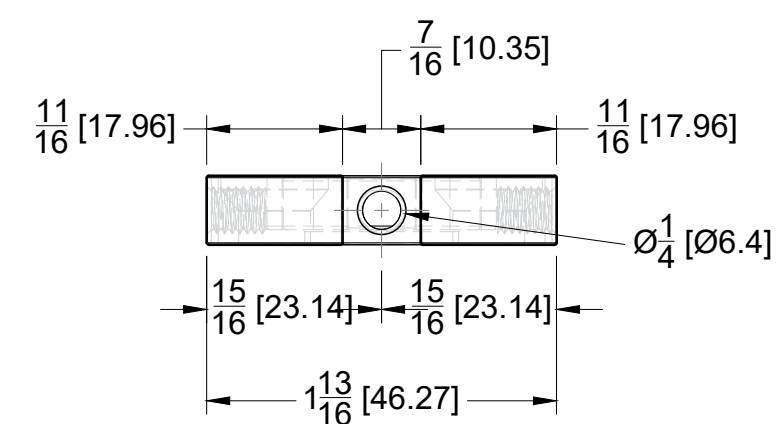
DETAIL A



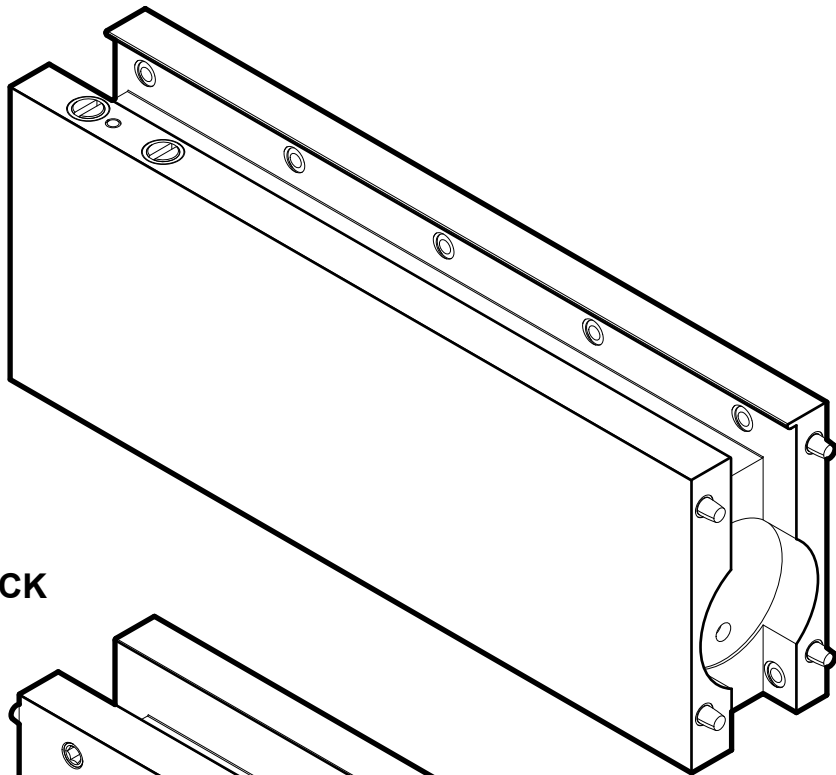
FRONT VIEW



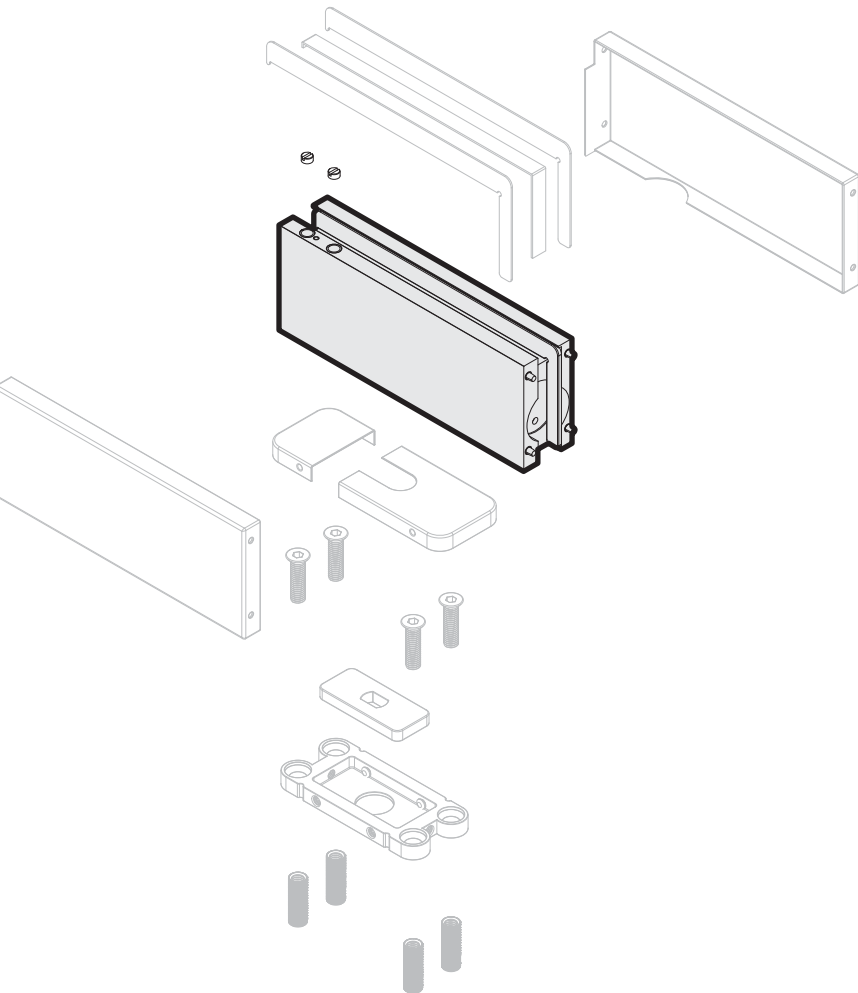
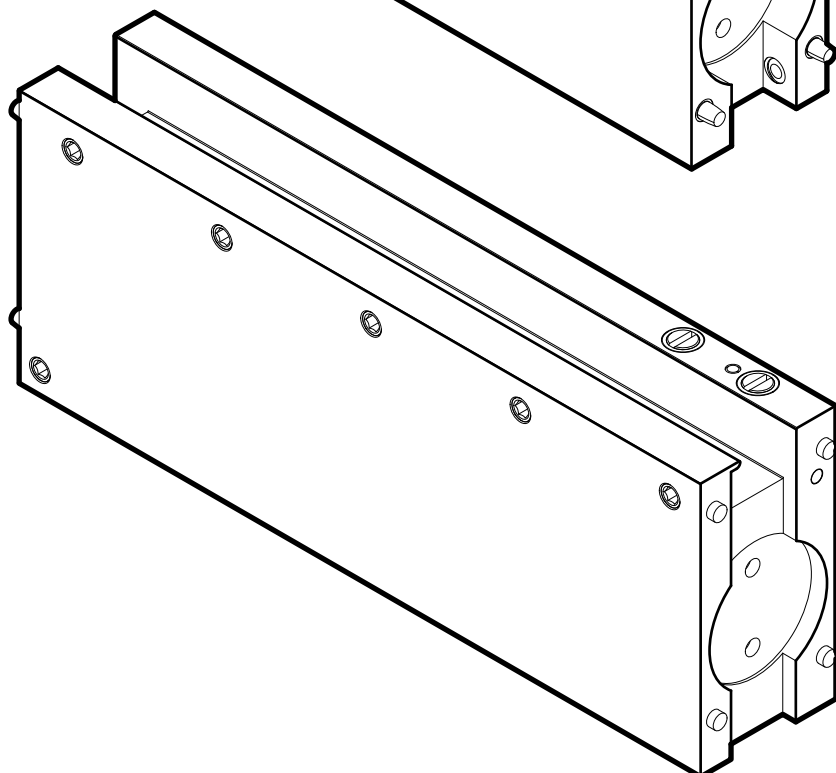
SIDE VIEW



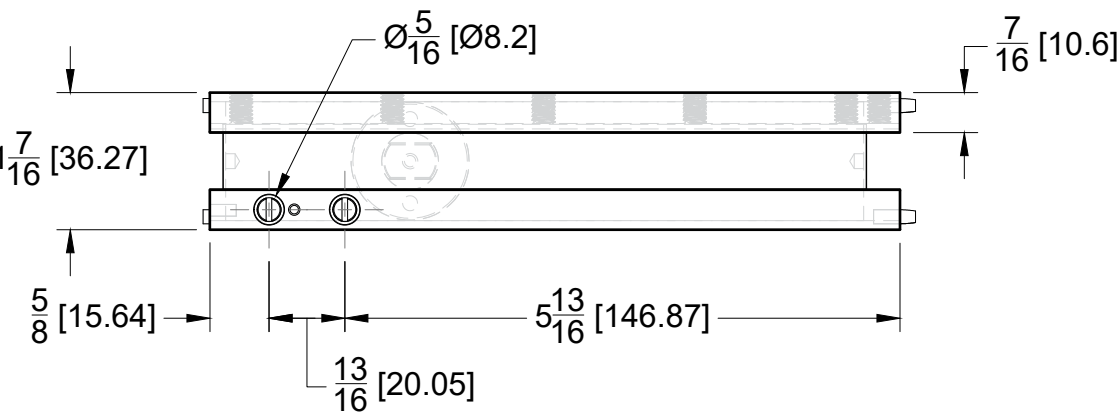
FRONT



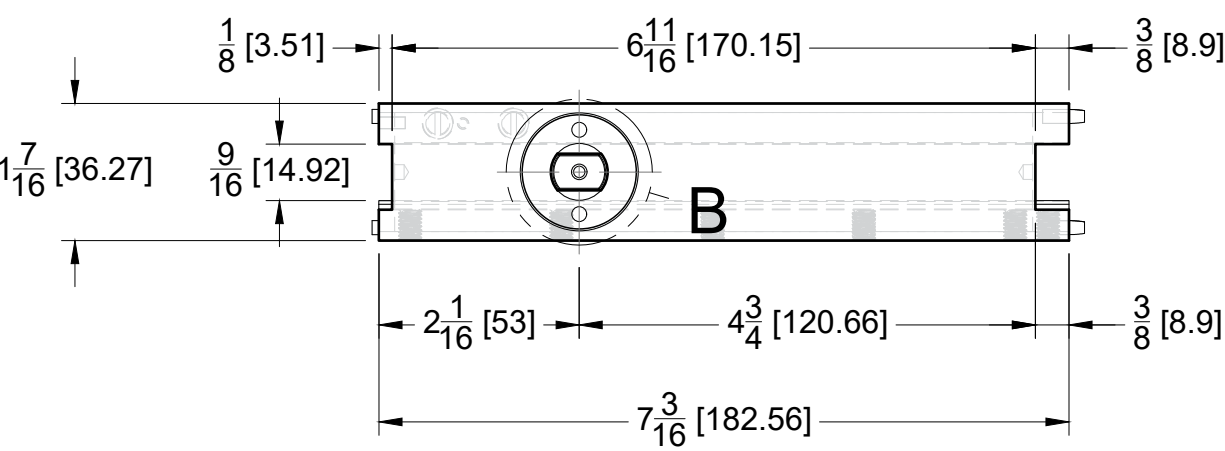
BACK



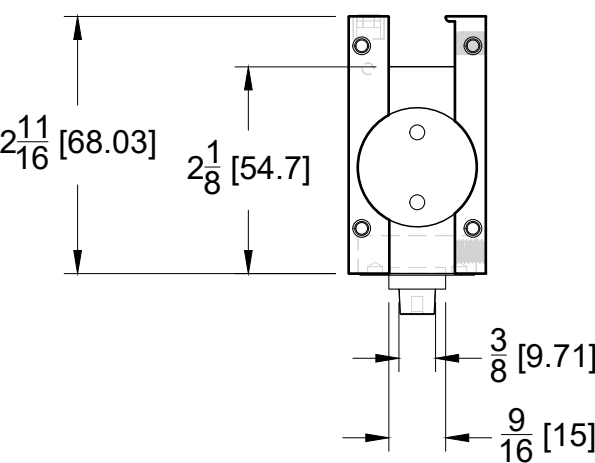
TOP VIEW



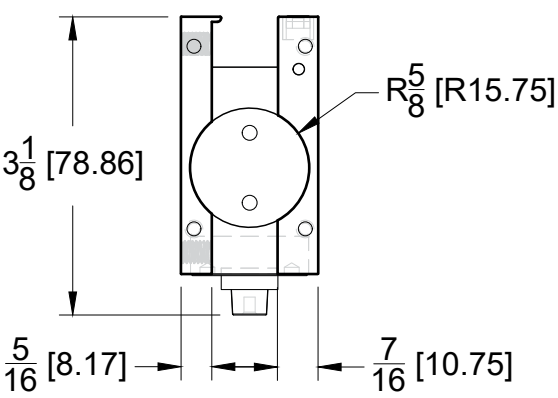
BOTTOM VIEW



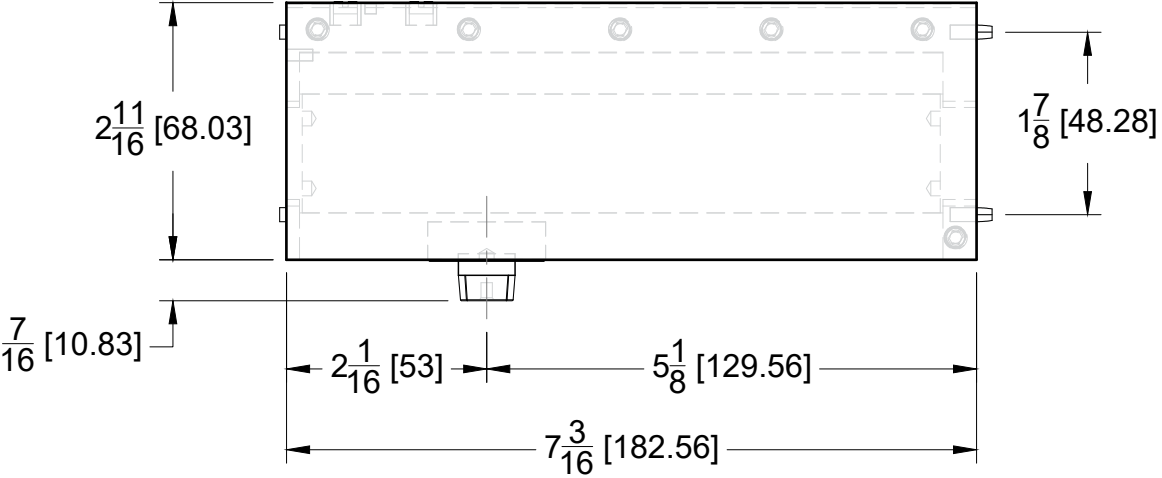
RIGHT SIDE VIEW



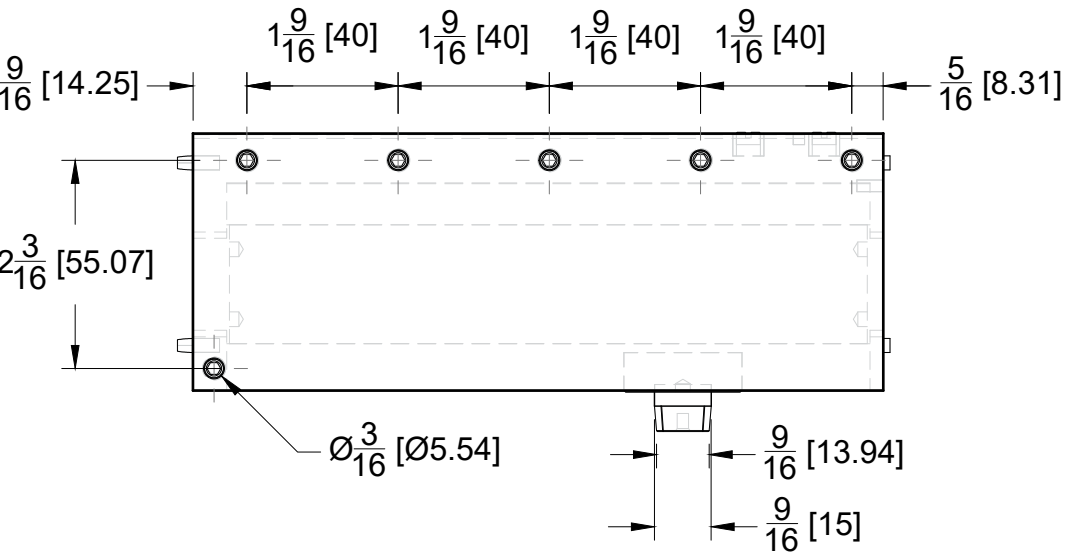
LEFT SIDE VIEW



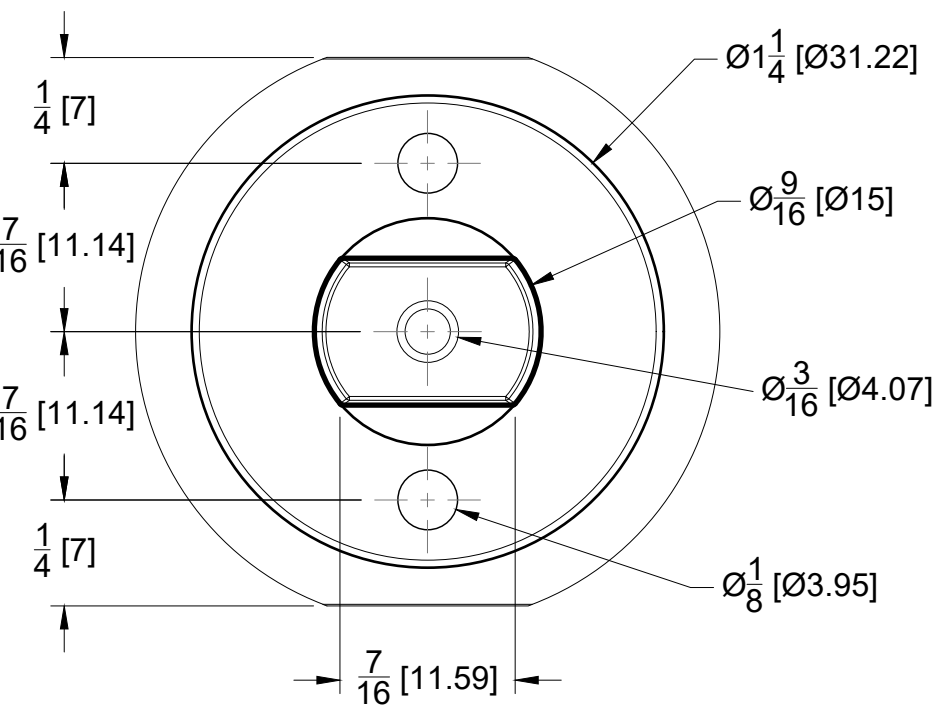
FRONT VIEW



BACK VIEW



DETAIL B



10101 NW 79th Ave
Hialeah Gardens, FL 33016
Phone: (877) 658-9008

Product:	Bottom Hydraulic Patch Fitting (90 Degree Hold Open)	
Code:	OCFH100-HO	Material: 304 Stainless Steel

Specifications:
Glass thickness: 3/8" (10 mm) to 1/2" (12 mm).
Cutout required - Tempered glass
Includes: One Bottom Hydraulic Patch Fitting
(90 Degree Hold Open)

BEFORE PROCEEDING WITH FABRICATION, PLEASE ENSURE THAT YOU VERIFY ALL MEASUREMENTS. IT IS CRUCIAL TO DOUBLE-CHECK THE SPECIFICATIONS TO AVOID ANY DISCREPANCIES. FOR THE MOST UP-TO-DATE TECHNICAL SPECSHEETS AND CUTOUTS, KINDLY VISIT GLASSHARDWARE.COM.
Date: 06/13/25
Sheet N°: 4/4